

Ruoholahden Sulka Porkkalankatu 24

Modern offices in the heart of a busy office area



Sulka enables efficient and comfortable working in a modern office building, in the office center of Ruoholahti.

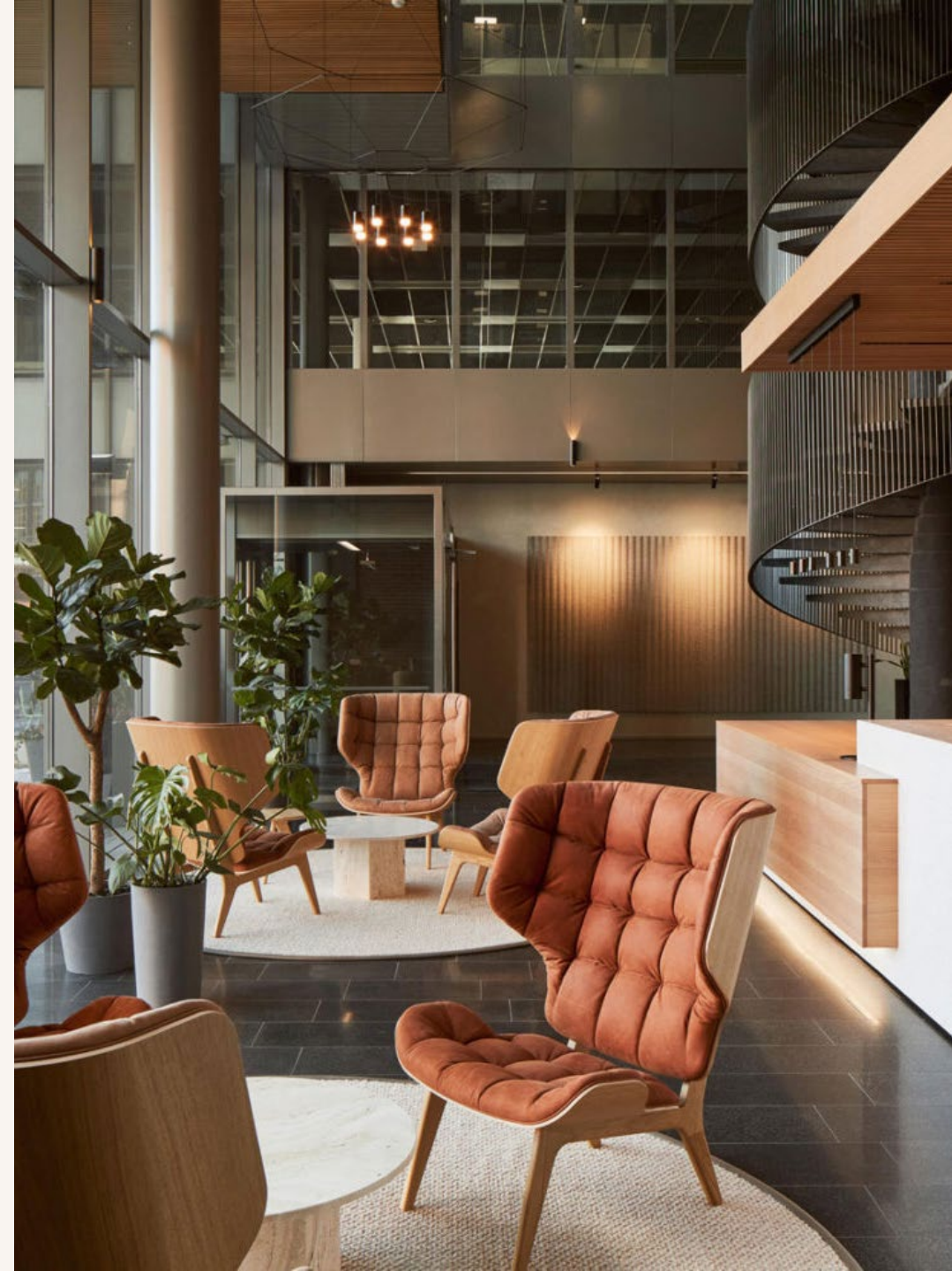
Ruoholahten Sulka, located at Porkkalankatu 24, is a property where services and public transport stops are within walking distance and the house is full of solutions that make everyday life easier. The property's office spaces are located around a wonderful courtyard with a skylight. The property, which received the BREEAM® - in Use Excellent level environmental certificate, has a lobby service, a parking garage, a Factory lunch restaurant and shared conference rooms.



Sulka offers its visitors a good working environment and a wonderful seascape.

The central location and the large windows opening onto Porkkalankatu are the absolute delights of the Sulka house. The windows also offer great seascapes of the Baltic Sea. Room height, space and light create an atmosphere in the premises and improve the comfort of the employees.

The spectacular and renovated Lauttasaari bridge, which is crossed daily by a large number of motorists, cyclists and pedestrians, adds its own finesse to the area. Getting to the property is effortless, as the Ruoholahti metro station is only a five-minute walk away, and buses and trams pass nearby. It is also convenient to arrive at Sula by car, bicycle or electric scooters.



The office building is close to good transport links. You can easily get here by public transport, car or bike.

Both public transport stops and Ruoholahti's comprehensive services are within walking distance of the property, which was completed in 2006, and it is easy to get to the house even by car. The property has its own parking garage, and the neighboring Ruoholahti Shopping Center offers not only a wide range of shops and services, but also more space for both traditional and electric cars if needed. Sulka is also a great place for the company's active athletes because of its



Area
Ruoholahti

Address
Porkkalankatu 24


Squares
11 000m²

Floors for rent
8 floors

Services
Lobby service, restaurant, parking garage

 Metro 600 m

 Bus 150 m

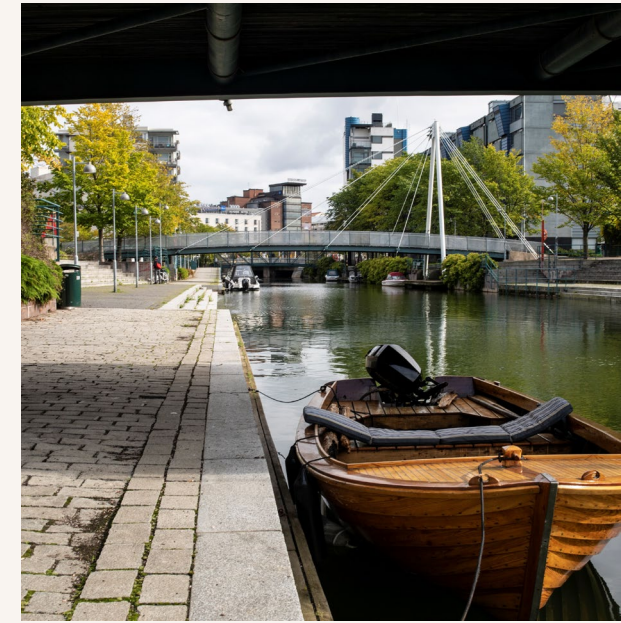
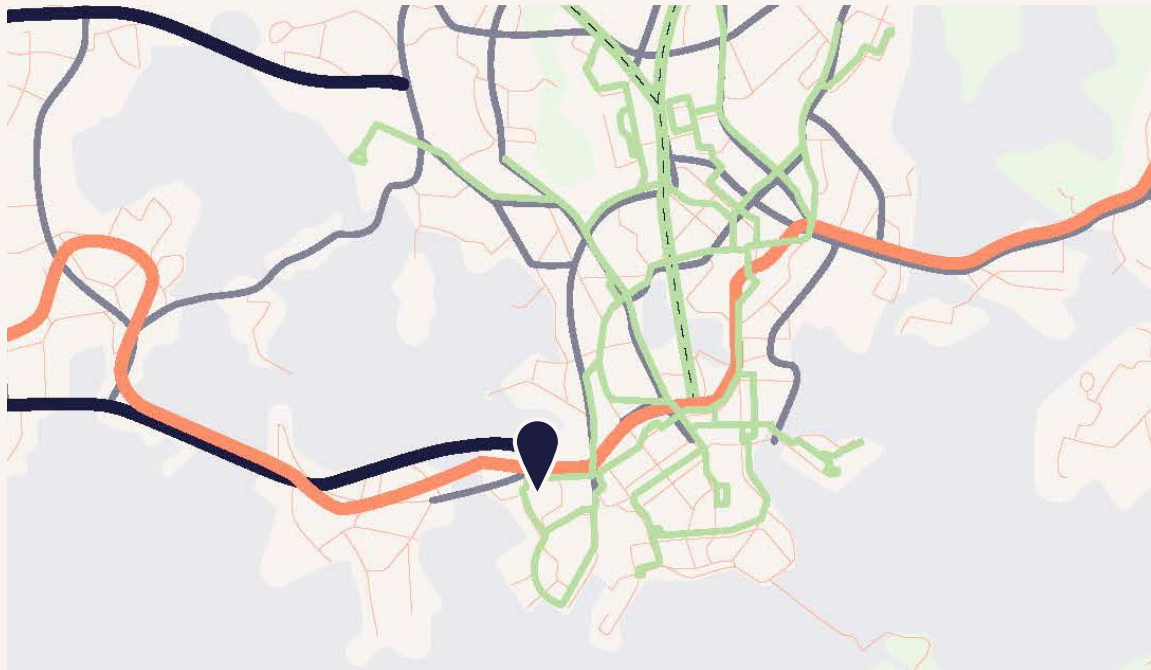
 Commuter train 1.8 km

 Tram 200 m

 Airport 20 km

Ruoholahti

Ruoholahti offers companies a dynamic work environment. The popularity of the area comes to the fore through several office concentrations. Ruoholahti's secret is the balance of office and residential construction, which support each other. When you take into account the good transportation connections, the immediate proximity to the center of Helsinki and the comfortable facilities, Ruoholahti's great popularity among companies is not surprising. The nearby Salmisaaari sports center and ice rink offer versatile hobby opportunities for visitors from near and far. Strongly growing Ruoholahti is home to approximately 6,000 residents and a workplace area for 19,000 people.



Destination services

- Lobby service
- Lunch restaurant
- Meeting rooms
- Parking garage (Ruoholahti shopping center)
- Bike shed
- Possibility to charge an electric car



Area services

- Ruoholahti shopping center
- Ruoholahti canal
- Excellent bike network
- Cable factory
- Hotels
- Ruoholahti health center
- The sea right next door

Sulka responsibility



BREAM Excellent certification until 2025
Energy certificate class B, until 2032



District heating
Far cold



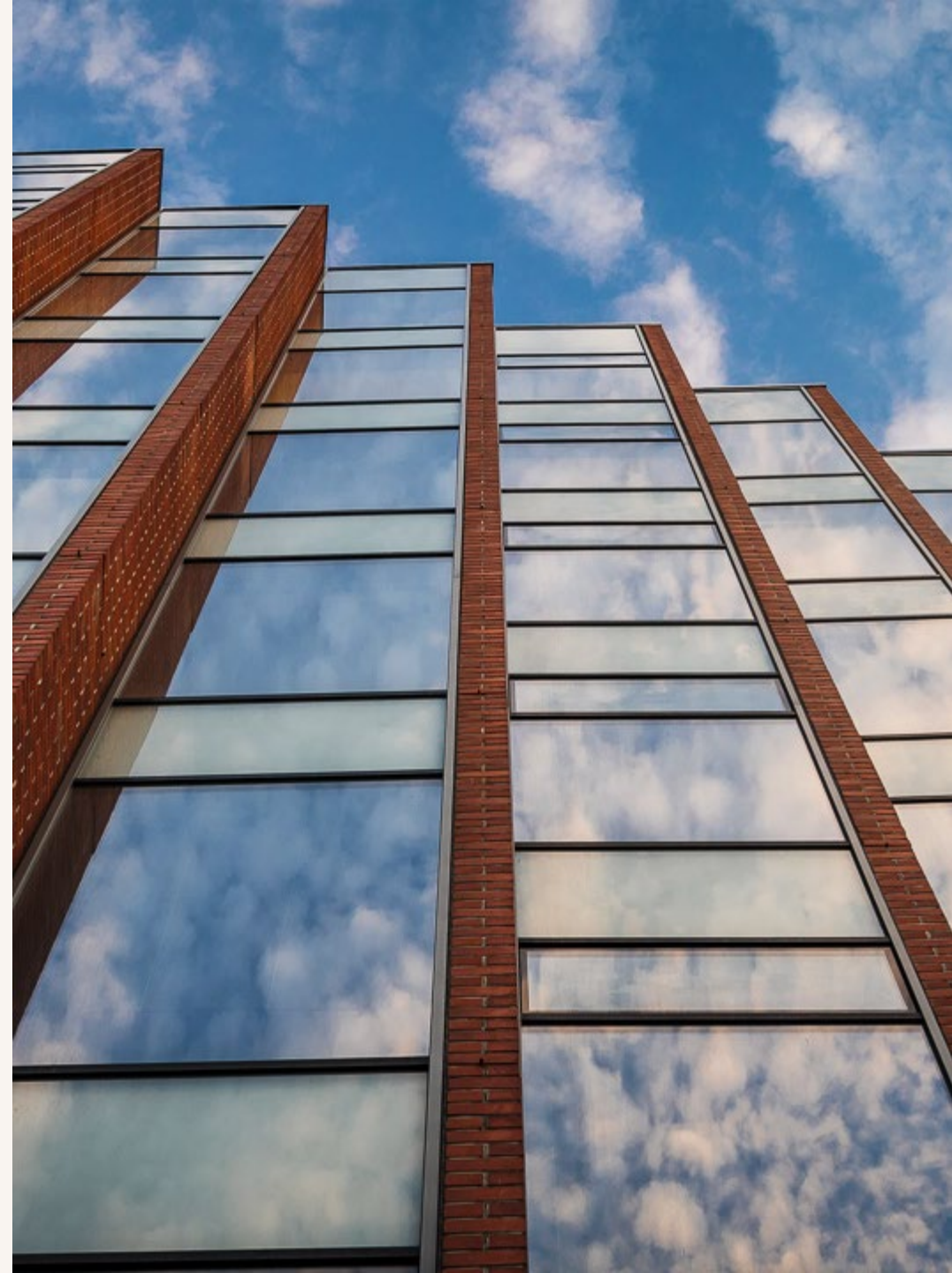
Sort points
All basic waste fractions



Carbon-free electricity
Energy efficient



Central location
Public connections



Antilooppi

Antilooppi is a sustainable real estate owner that focuses on office properties in the Helsinki Metropolitan Area.

We understand that success is created by happy and healthy employees and we are aware of how the environment and its services can have an impact on well-being.

Antilooppi's values are sustainability, forerunner and engaged. Sustainability is one of our strategic focal points and part of the work of all Antilooppi employees.

In our sustainability efforts, we focus on carbon neutrality and the wellbeing of people. We enable the success and wellbeing of our customer by owning, developing and managing work environments in excellent locations with a long-term, sustainable approach.

Major owner in the eastern and western city centre of Helsinki

Team of 35 professionals

Owned by pension company Ilmarinen and AMF Tjänstepension AB

33 properties, 400 000 m² of rental space

100% environmentally certified property stock

Our commitment to the UN 2030 Sustainable Development Goals and the

WGBC Net Zero Carbon Commitment 2030



Interested? We are happy to help



Kirsi Zeddini

Leasing Manager
040 515 4369
kirsi.zeddini@antilooppi.fi



Mari Härkönen

Leasing Manager
050 375 5531
mari.harkonen@antilooppi.fi



Tanja Fjäder

Associate Director, Solution Sales
040 193 1058
tanja.fjader@antilooppi.fi

antilooppi.fi



Making places for people and businesses

antilooppi.fi